

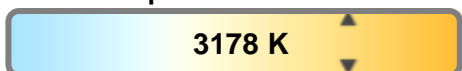
Light efficiency:



Light quality:



Color temperature:

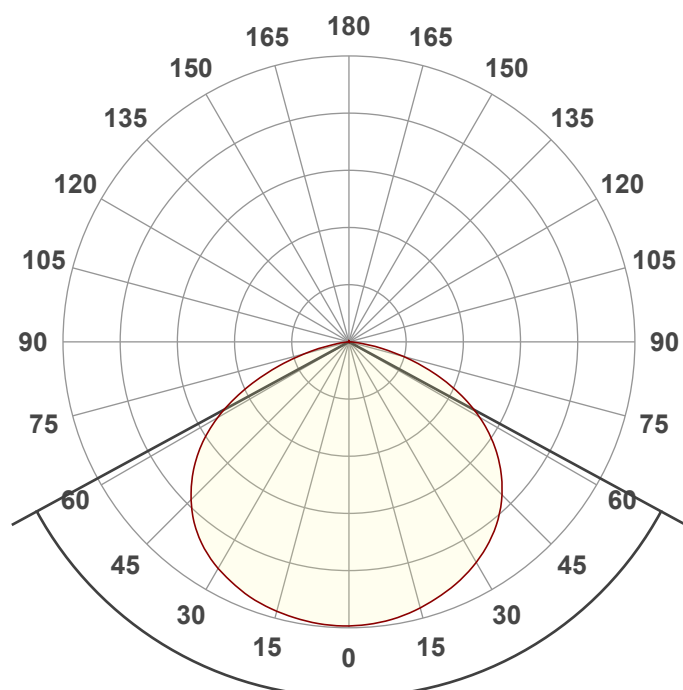


Output: 4399 lm

Peak: 1400 cd

Power: 110.9 W

PF: 0.99



Tracking number: [n/a](#)

Product name:

JoltBar FXIP

Item number:

3200K

Date and time:

4/17/2024 12:56:55 PM

Description:

Beam angle 123°

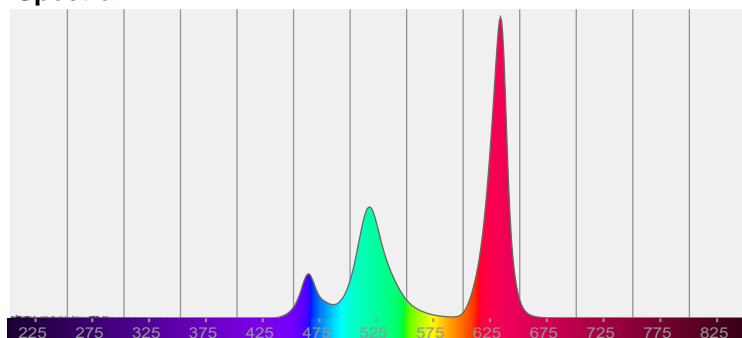


CIE 1931

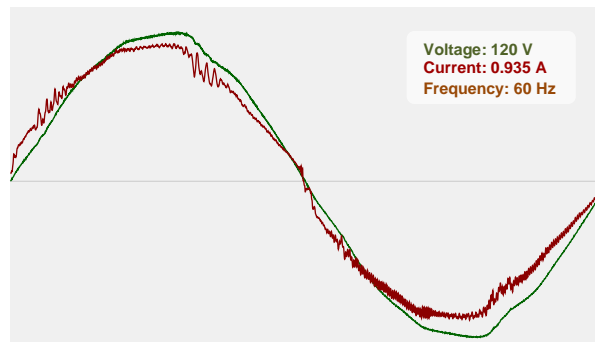
x: 0.427

y: 0.404

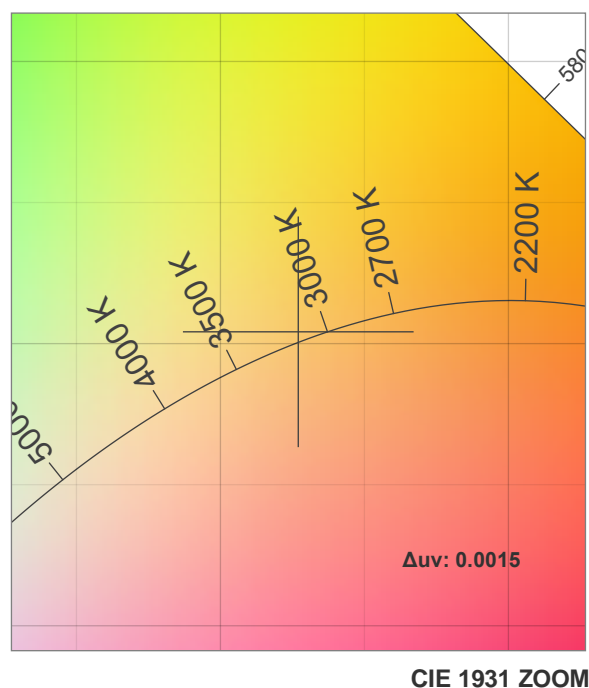
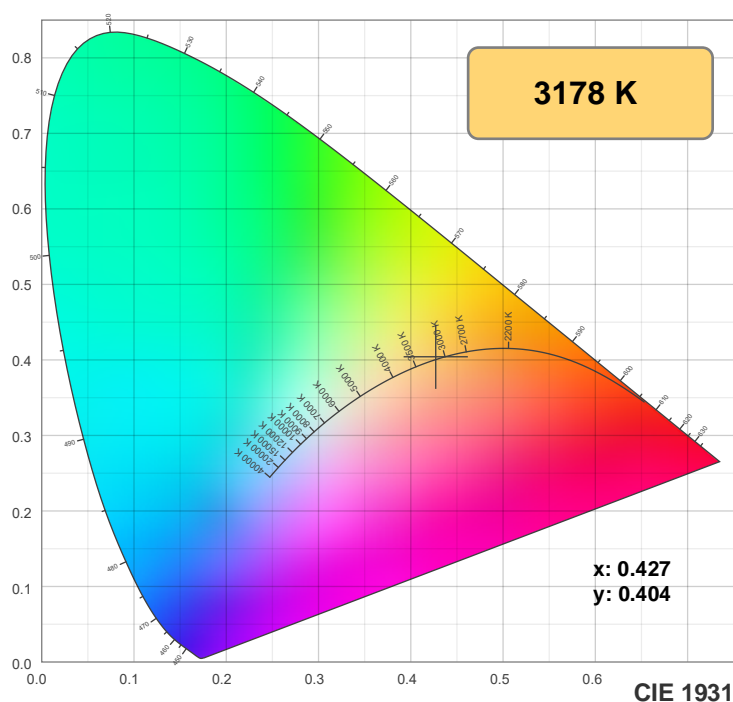
Spectra



Power

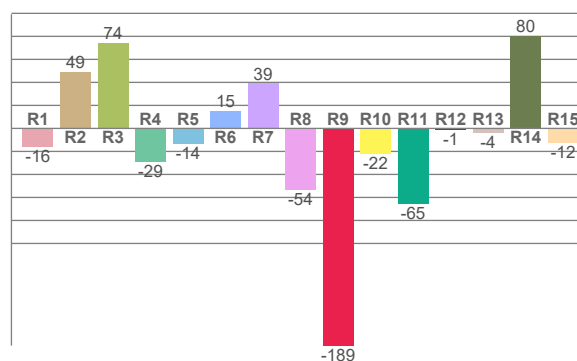
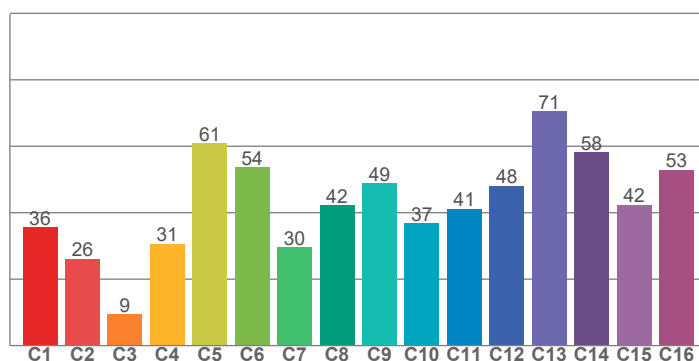


Color details



TM-30: 42.1

CRI: 8.2 (R1-R8)



CRI R values, only R1-R8 are used to calculate final CRI value

R1	R2	R3	R4	R5	R6	R7	R8	R9	R10	R11	R12	R13	R14	R15
-16.4	49.2	74.5	-29.2	-13.5	15.5	39.1	-53.9	-188.8	-21.9	-65.3	-1.3	-3.6	80.5	-12.3

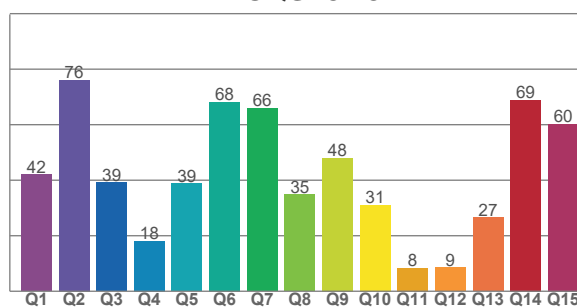
TM30 C values, 16 binned values out of total of 99 C values

C1	C2	C3	C4	C5	C6	C7	C8	C9	C10	C11	C12	C13	C14	C15	C16
35.6	26.0	9.4	30.7	60.8	53.6	29.6	42.3	48.8	36.8	41.2	48.0	70.5	58.2	42.4	52.9

CQS Q values

Q1	Q2	Q3	Q4	Q5	Q6	Q7	Q8	Q9	Q10	Q11	Q12	Q13	Q14	Q15
42.1	76.0	39.1	18.1	38.8	68.2	65.9	34.9	48.0	31.1	8.3	8.6	26.5	68.8	60.3

CQS: 37.3



Color parameters

Color temperature	Color rendering index	Red component	Color fidelity	Color gamut	Color quality scale	Color coordinate cie 1931	Color coordinate cie 1931	Color coordinate	Color coordinate	Color deviation from black body
CCT	CRI	CRI R9	TM30 Rf	TM30 Rg	CQS	x	y	u	v	Δuv
3178 K	8.2	-188.8	42.1	105.6	37.3	0.427	0.404	0.244	0.347	0.0015

TM-30 details

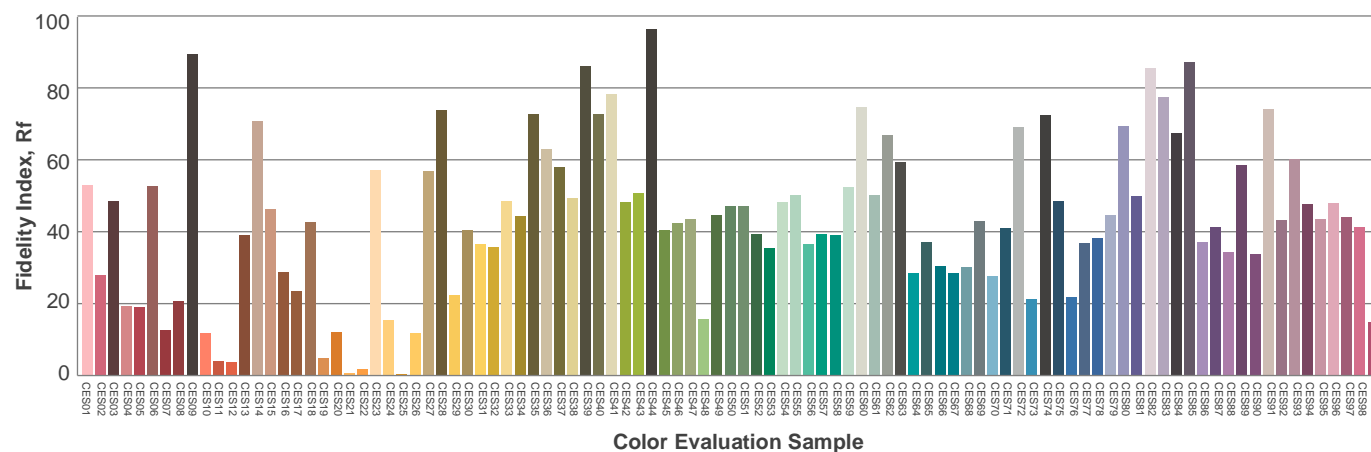
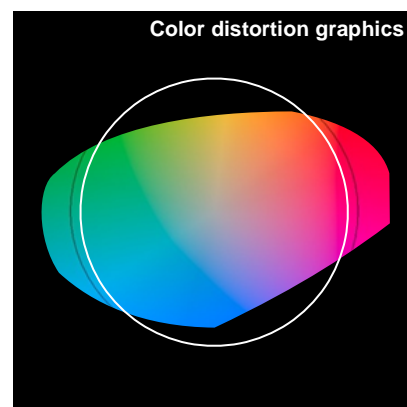
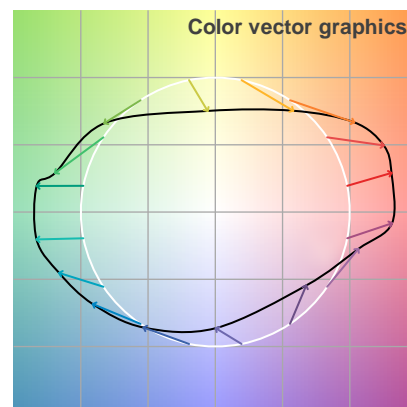
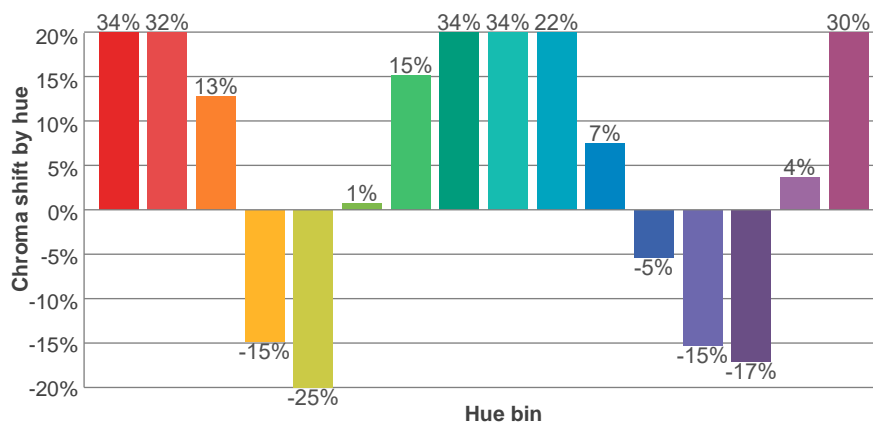
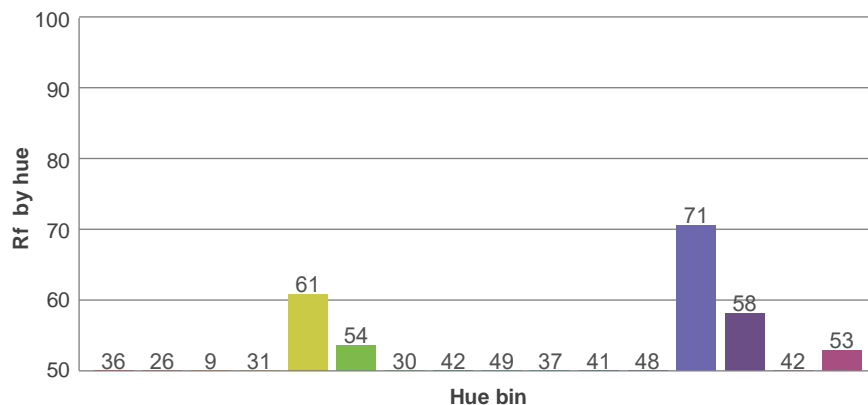
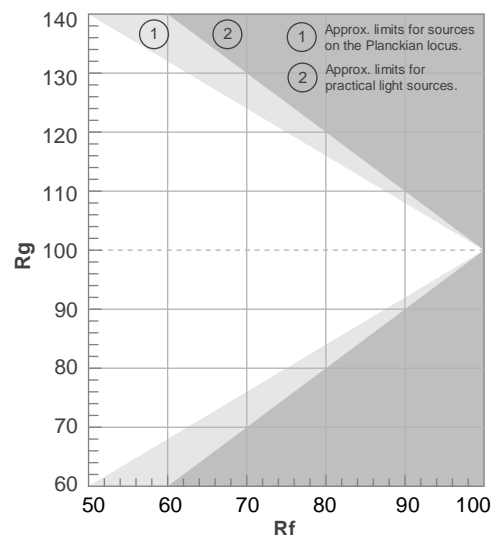
Rf 42.1

Fidelity index Rf

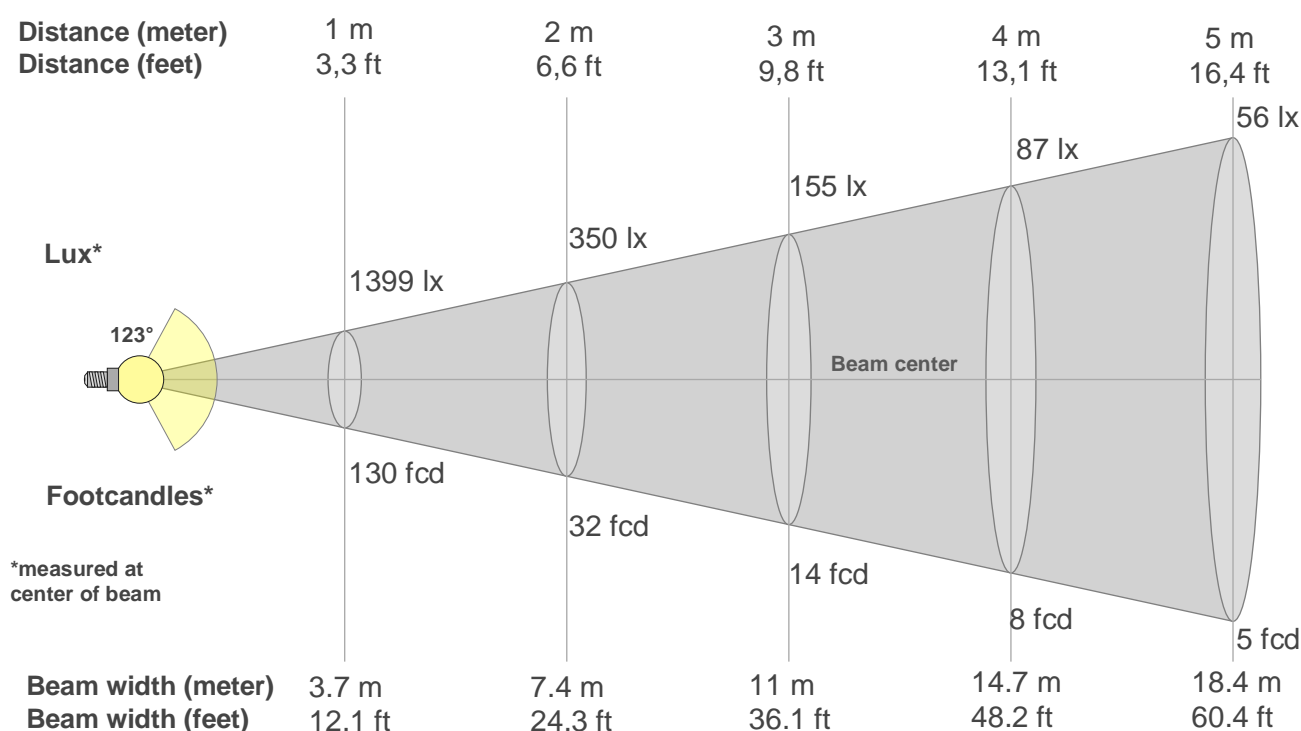
Rg 105.6

Gamut index Rg

Hue Bin	R _f	Shifts (%)	
		Chroma	Hue
1	36	34%	3%
2	26	32%	-28%
3	9	13%	-49%
4	31	-15%	-42%
5	61	-25%	-9%
6	54	1%	32%
7	30	15%	42%
8	42	34%	7%
9	49	34%	-6%
10	37	22%	-27%
11	41	7%	-38%
12	48	-5%	-36%
13	71	-15%	-17%
14	58	-17%	26%
15	42	4%	36%
16	53	30%	17%



Beam details



Beam intensities from 1-20m

1m	2m	3m	4m	5m	6m	7m	8m	9m	10m	11m	12m	13m	14m	15m	16m	17m	18m	19m	20m
3.3ft	6.6ft	9.8ft	13.1ft	16.4ft	19.7ft	23ft	26.2ft	29.5ft	32.8ft	36.1ft	39.4ft	42.7ft	45.9ft	49.2ft	52.5ft	55.8ft	59.1ft	62.3ft	65.6ft
1399lx	350lx	155lx	87lx	56lx	39lx	29lx	22lx	17lx	14lx	12lx	10lx	8lx	7lx	6lx	5lx	5lx	4lx	4lx	3lx
130fcd	32.5fcd	14.4fcd	8.1fcd	5.2fcd	3.6fcd	2.7fcd	2fcd	1.6fcd	1.3fcd	1.1fcd	0.9fcd	0.8fcd	0.7fcd	0.6fcd	0.5fcd	0.4fcd	0.4fcd	0.4fcd	0.3fcd

Intensities in 0° c-plane

0°	5°	10°	15°	20°	25°	30°	35°	40°	45°	50°	55°	60°	65°	70°	75°	80°	85°	90°	95°
1399	1393	1379	1357	1328	1295	1254	1203	1141	1065	973	866	742	598	440	280	136	38	2	0
100%	100%	99%	97%	95%	93%	90%	86%	82%	76%	70%	62%	53%	43%	31%	20%	10%	3%	0%	0%

Intensities in 90° c-plane

0°	5°	10°	15°	20°	25°	30°	35°	40°	45°	50°	55°	60°	65°	70°	75°	80°	85°	90°	95°
1399	1393	1379	1357	1328	1295	1254	1203	1141	1065	973	866	742	598	440	280	136	38	2	0
100%	100%	99%	97%	95%	93%	90%	86%	82%	76%	70%	62%	53%	43%	31%	20%	10%	3%	0%	0%

Intensities in 180° c-plane

0°	5°	10°	15°	20°	25°	30°	35°	40°	45°	50°	55°	60°	65°	70°	75°	80°	85°	90°	95°
1399	1397	1388	1374	1354	1324	1288	1241	1179	1098	1001	886	745	580	402	230	91	16	1	0
100%	100%	99%	98%	97%	95%	92%	89%	84%	78%	72%	63%	53%	41%	29%	16%	7%	1%	0%	0%

Intensities in 270° c-plane

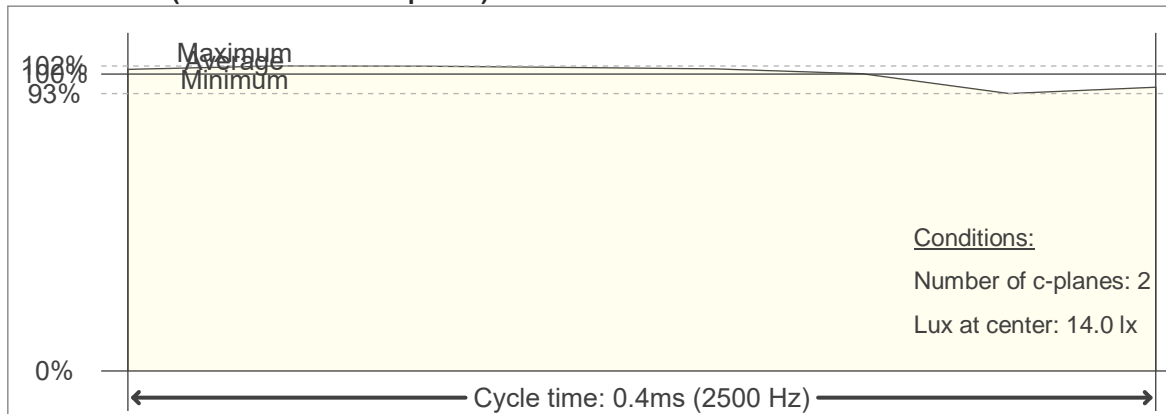
0°	5°	10°	15°	20°	25°	30°	35°	40°	45°	50°	55°	60°	65°	70°	75°	80°	85°	90°	95°
1399	1397	1388	1374	1354	1324	1288	1241	1179	1098	1001	886	745	580	402	230	91	16	1	0
100%	100%	99%	98%	97%	95%	92%	89%	84%	78%	72%	63%	53%	41%	29%	16%	7%	1%	0%	0%

Beam angle 50%	Field angle 10%	Cutoff angle 2,5%	Intensity ratio in 120° cone	Intensity ratio in 90° cone
123°	157.9°	168.7°	79.7%	52.4%

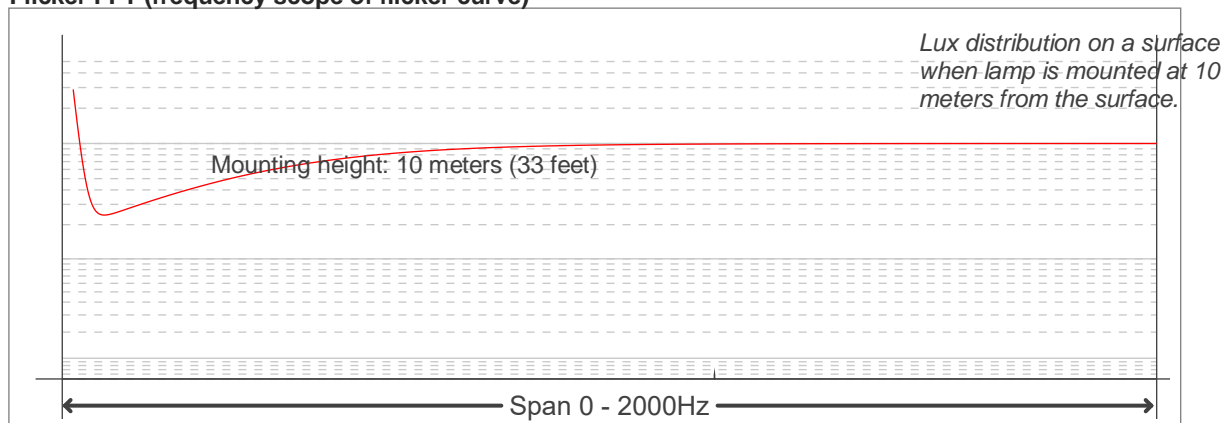
Flicker

Flicker curve (complete sampled flicker signal)

Flicker frame (frame of one flicker period)



Flicker FFT (frequency scope of flicker curve)



Flicker results:

Flicker frequency:		2500 Hz	
Flicker index:	0.01	JA8/10 40Hz	0.01 %
Flicker percentage:	8.4 %	JA8/10 90Hz	0.02 %
SVM: (Visual flicker)	0.01	JA8/10 200Hz	0.05 %
PstLM	0.97	JA8/10 400Hz	0.11 %
Mp	0	JA8/10 1000Hz	0.72 %

Flicker conditions:

Sample rate:	20000 samples/second
--------------	----------------------